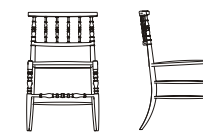


cappellini

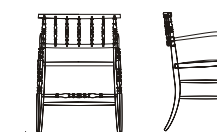




NA/1
cm. 44x45x44/79h.
inch 17,25x17,75x17,25/31h.

NA/1S
cm. 44x45x44/79h.
inch 17,25x17,75x17,25/31h.

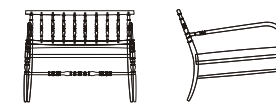
NA/1SC
cm. 48x49x46/76h.
inch 19x19,25x18/30h.



NA/1CB
cm. 55x45x44/79h.
inch 21,75x17,75x17,25/31h.

NA/1CBS
cm. 55x45x44/79h.
inch 21,75x17,75x17,25/31h.

NA/1CBSC
cm. 55x49x46/76h.
inch 21,75x19,25x18/30h.



NA/2CB
cm. 73x74x36/60h.
inch 28,75x29,25x14,25/23,75h.

NA/2CBS
cm. 73x74x36/60h.
inch 28,75x29,25x14,25/23,75h.

NA/CU2 cuscino/coussin/cushion/Kissen
cm. 62x6x32h.
inch 24,50x2,25x12,50h.

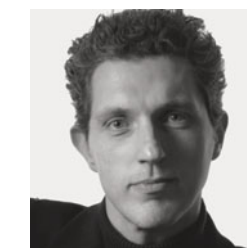
NA/CU2S cuscino/coussin/cushion/Kissen
cm. 62x6x32h.
inch 24,50x2,25x12,50h.

Sedia con o senza braccioli e poltroncina con struttura in legno tornito e imbottitura in poliuretano espanso. Disponibile in due versioni: struttura laccata opaca nera e seduta rivestita in pelle nera liscia o lavorata, oppure con struttura laccata opaca bianca e seduta rivestita in pelle bianca liscia o lavorata. Per la poltroncina è disponibile un cuscino schienale rivestito con la stessa pelle della seduta. La sedia con e senza braccioli può anche avere la seduta realizzata con cinghie in poliestere con logo "cappellini", nere su struttura nera e bianche su struttura bianca.

Chaises avec ou sans accoudoirs et petit fauteuil avec structure en bois tourné et assises en polyuréthane expansé. Disponible dans les versions: structure laquée opaque noir et assise revêtue en cuir noir imprimé ou lisse, ou structure laquée opaque blanc et assise revêtue en cuir blanc imprimé ou lisse. Pour le fauteuil est disponible un coussin dossier revêtu avec le même cuir de l'assise. La chaise avec ou sans accoudoirs est aussi disponible avec courroies en polyestère avec logo "cappellini", noir sur structure noire et blanc sur structure blanche.

Chair with or without armrests and small armchair with wood turned structure and seat upholstered with polyurethane foam. Available in two versions: black matt lacquered structure and seat covered in black smooth or stamped leather, or white matt lacquered structure and seat covered in white smooth or stamped leather. A back cushion covered in the same leather as the seat is available for the small armchair. Seat of chair with or without armrests is also available manufactured in polyester belts with "cappellini" logo, black colour on black structure, white colour on white one.

Stuhl mit oder ohne Armlehne und Sesselchen. Gestell aus gedrechseltem Holz und Sitzflächen mit PU-Schaum gepolstert. Verfügbar mit Struktur aus matt schwarz lackiertem Holz und Sitzfläche in schwarzem glattem oder geprägtem Leder oder aus matt weiß lackiertem Holz und Sitzfläche in weißem glattem oder geprägtem Leder. Der Sessel ist mit einem Rückenkissen erhältlich, das in dem gleichem Leder wie der Sitz bezogen wird. Stuhl mit oder ohne Armlehnen sind auch mit Sitzfläche aus Polyestergerurten mit "cappellini" Logo produziert, Farbe schwarz für schwarzes Gestell und weiß für weißes Gestell.



Nato a Boxtel in Olanda nel 1963, matura le sue esperienze nel campo del design prima nell'ambito di Droog Design, poi con la società Wanders Wanders, oggi con Moooi. Attualmente collabora con Authentics, Flos, Magis, Mandarin Duck, Salviati. Irruente e sempre entusiasta, crea prodotti delicati e leggeri, come se l'alta tecnologia di cui si serve fosse una seconda natura per l'uomo. Per Marcel Wanders importante è conoscere i materiali, sapere cosa possono fare, come si producono e come possono essere lavorati: così nascono i suoi prodotti, una sintesi fra manualità e tecnologia industriale.

Born in Boxtel, the Netherlands, in 1963, he developed his experience in design field first in the sphere of Droog Design, then with Wanders Wanders brand, nowadays with Moooi. He collaborates with Authentics, Flos, Magis, Mandarin Duck, Salviati. Impetuous and always enthusiastic, he creates delicate and light objects, quite as the used technology was a second nature for human race. Marcel Wanders believes it is important to learn about materials, to know what they can do, how they are produced and how they are processed: in this way he creates his project, a synthesis of handcraft and industrial technology.

cappellini

cap design spa 22060 Arosio (Como - Italy) - tel. +39/031759111 - fax +39/031763322.33 - www.cappellini.it - e-mail cappellini@cappellini.it