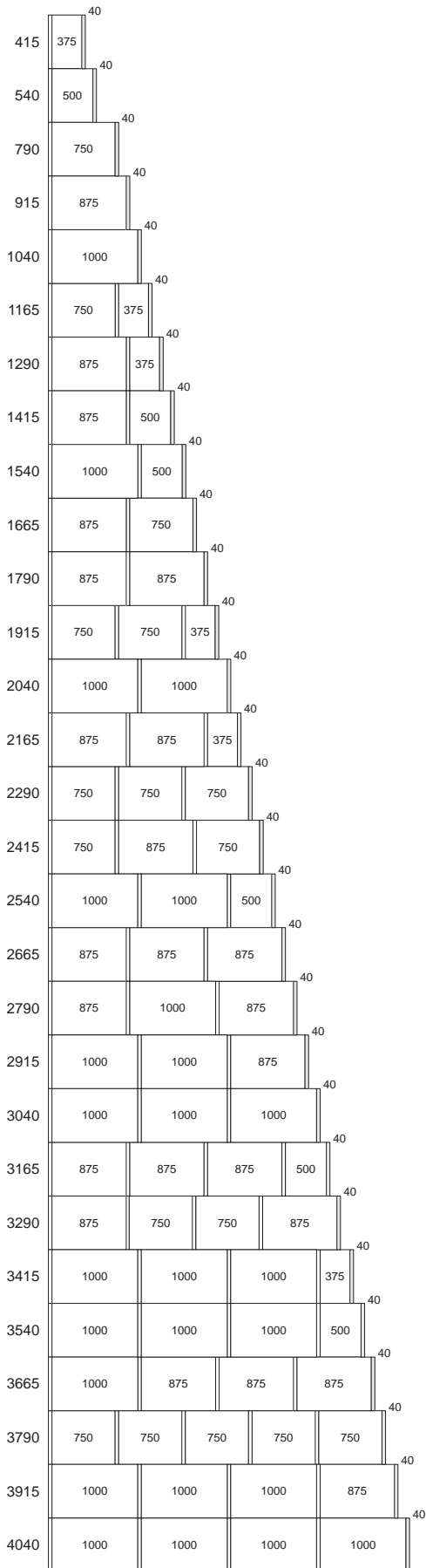


# Technical hints

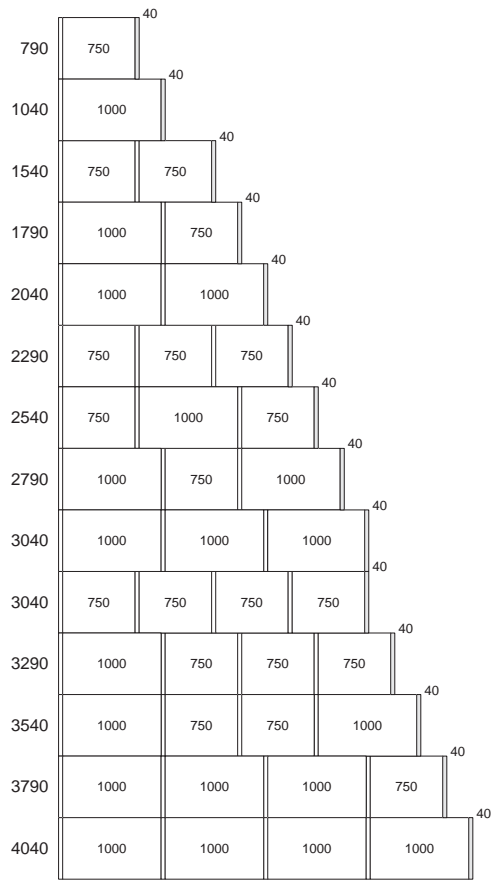
## ● Modularity with hinged doors

total width = column's width + side



## ● Modularity with folding doors

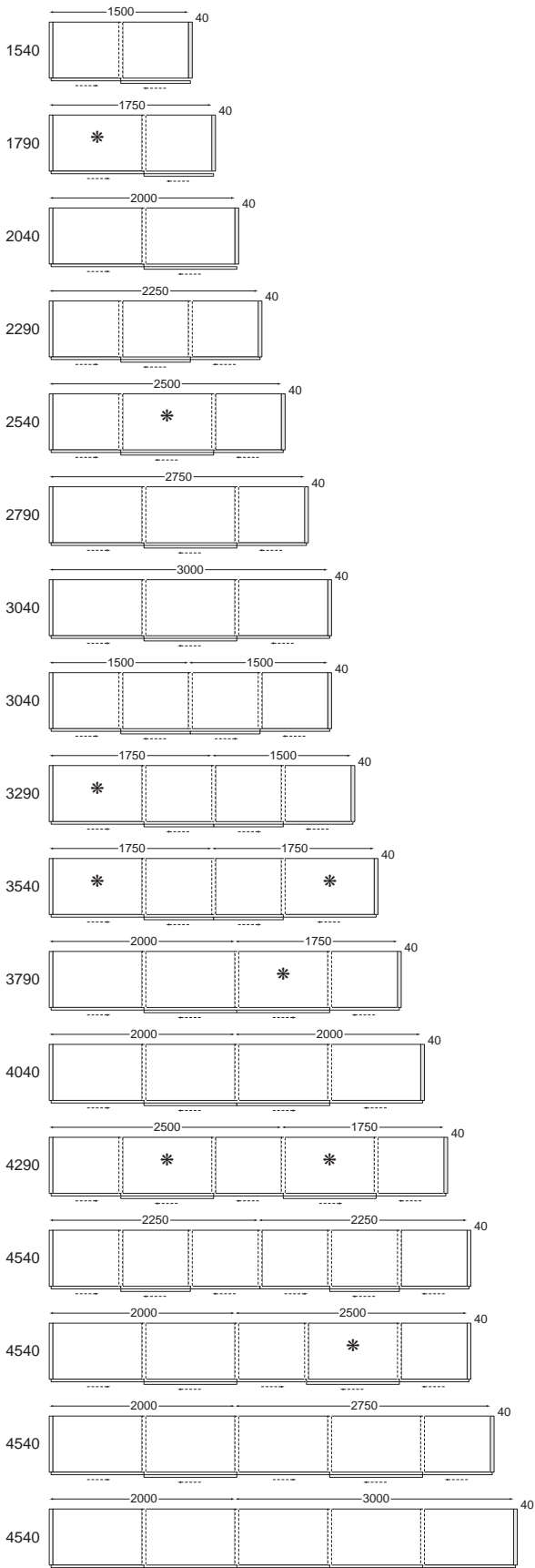
total width = column's width + side



## ● Modularity with sliding doors

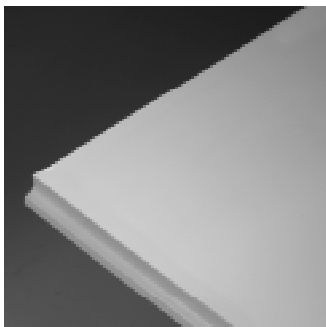
total width = column's width + side

in columns with\* it is not possible to insert lift for clothes hanger, drawer units, pull-out trouser rack. It's possible to couple columns with sliding doors or with folding doors. If the wardrobe with sliding doors is made of two doors, the coupling with hinged door or with folding door is foreseen only on side with depth 631 mm



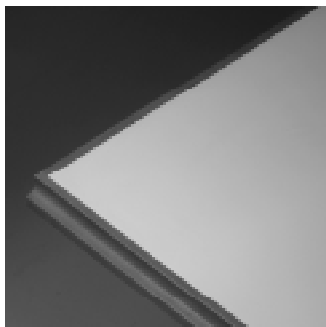
# SHEER doors

## SHEER PLAIN



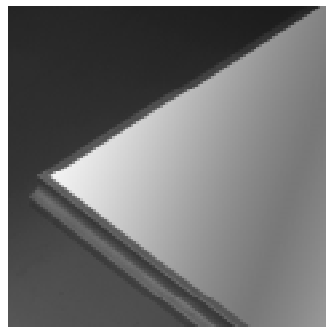
- mat in our colours
- mat by sample
- italian walnut
- natural cherry
- black walnut
- oak
- wenge

## SHEER WOODEN PROFILE



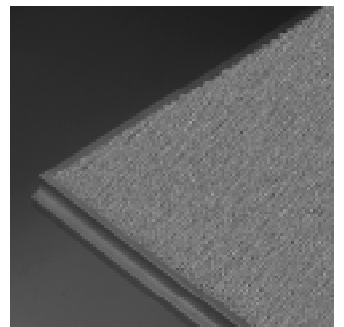
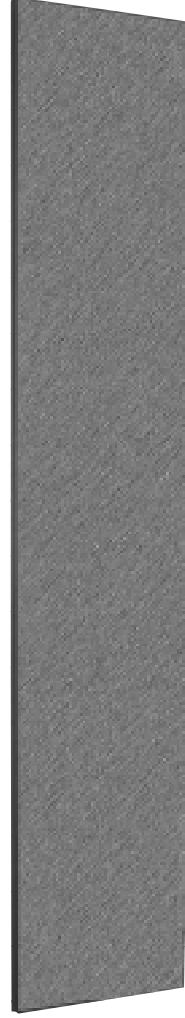
- profile:
  - italian walnut
  - natural cherry
  - black walnut
  - oak
  - wenge
- panel:
  - mat in our colours
  - mat by sample

## SHEER NATURAL MIRROR



- profile:
  - mat in our colours
  - mat by sample
  - italian walnut
  - natural cherry
  - black walnut
  - oak
  - wenge

## SHEER CLIENT'S FABRIC



- profile:
  - mat in our colours
  - mat by sample
  - italian walnut
  - natural cherry
  - black walnut
  - oak
  - wenge

PAY ATTENTION: for solid colour fabrics and fabrics without repeating pattern calculate 10 cm more in height and width compared to the dimensions of the door.  
For fabrics with repeating pattern, calculate one more repeating pattern compared to the height of the door.

---

**SHEER WHITE  
SATINED GLASS**



**SHEER  
GLOSSY GLASS**



profile:  
- mat in our colours  
- italian walnut  
- natural cherry  
- black walnut  
- oak  
- wenge

white satined glass

profile:  
- mat in our colours  
- italian walnut  
- natural cherry  
- black walnut  
- oak  
- wenge

glossy glass:  
- white (extra light glass)  
- ivory 820  
- sand 430  
- beige grey B103  
- havana brown B104  
- ruby red Z102  
- Africa brown 440  
- dark grey 200

# CLIP doors

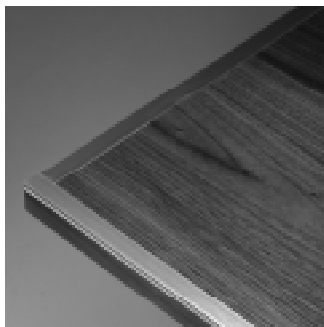
---

## CLIP PLAIN



- mat in our colours
- mat by sample
- italian walnut
- natural cherry
- black walnut
- oak
- wenge

## CLIP ALUMINIUM PROFILE

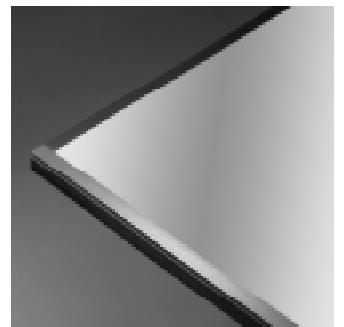


- mat in our colours
- mat by sample
- italian walnut
- natural cherry
- black walnut
- oak
- wenge

profile:  
- aluminium

## CLIP NATURAL MIRROR

profile: aluminium



profile:  
- aluminium  
natural mirror

---

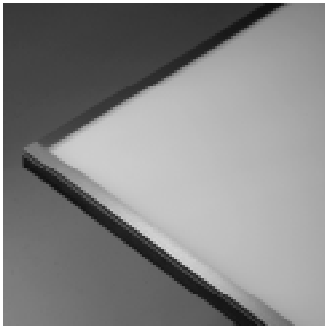
**CLIP WHITE  
SATINED GLASS**

profile: aluminium



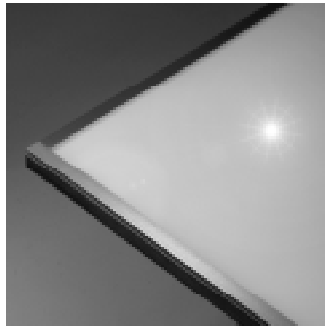
**CLIP  
GLOSSY GLASS**

profile: aluminium



profile:  
- aluminium

white satined glass



profile:  
- aluminium

glossy glass:  
- white (extra light glass)  
- ivory 820  
- sand 430  
- beige grey B103  
- havana brown B104  
- ruby red Z102  
- Africa brown 440  
- dark grey 200

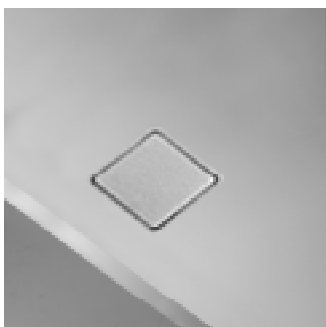
# SEVENTY doors

---

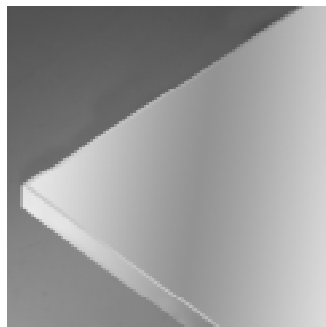
## SEVENTY PLAIN



- mat in our colours
- mat by sample
- oak
- wenge



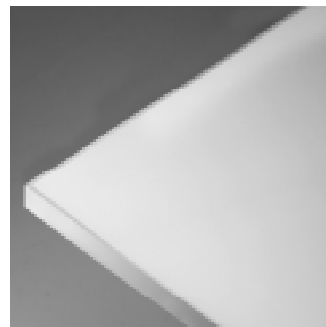
## SEVENTY NATURAL MIRROR



natural mirror

PAY ATTENTION: Not available for height 2870.

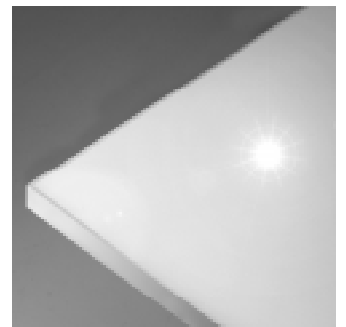
## SEVENTY WHITE SATINED GLASS



white satined glass

PAY ATTENTION: Not available for height 2870.

## SEVENTY GLOSSY GLASS

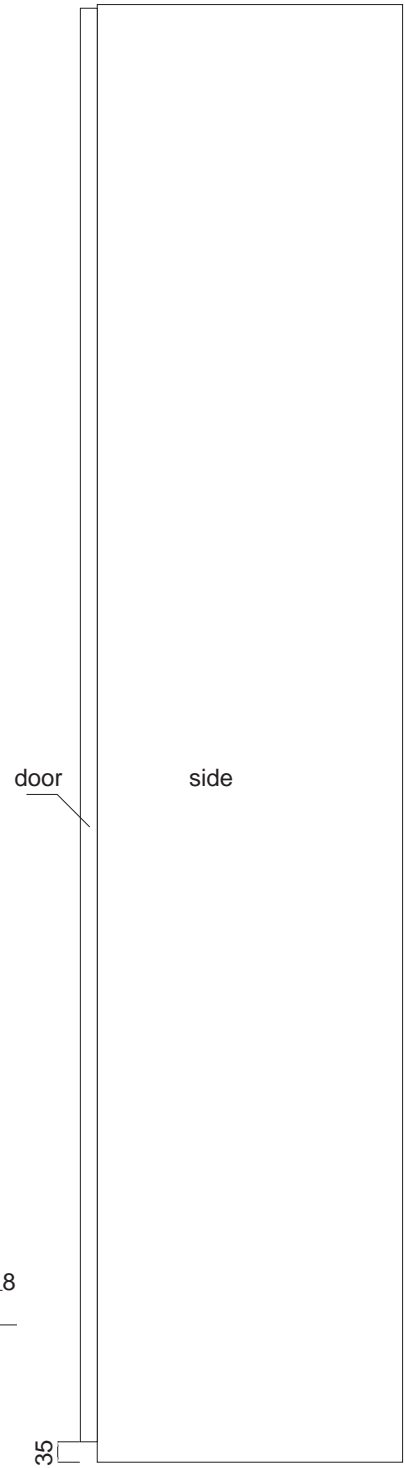
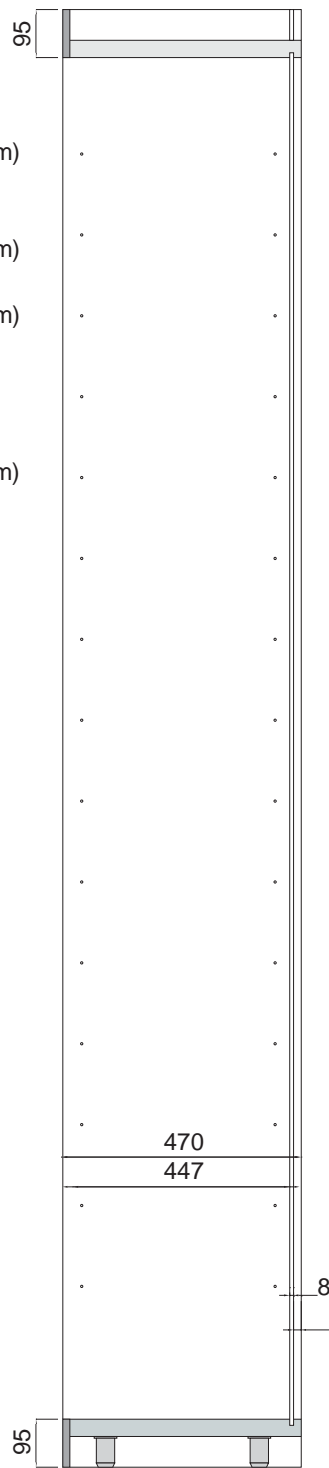
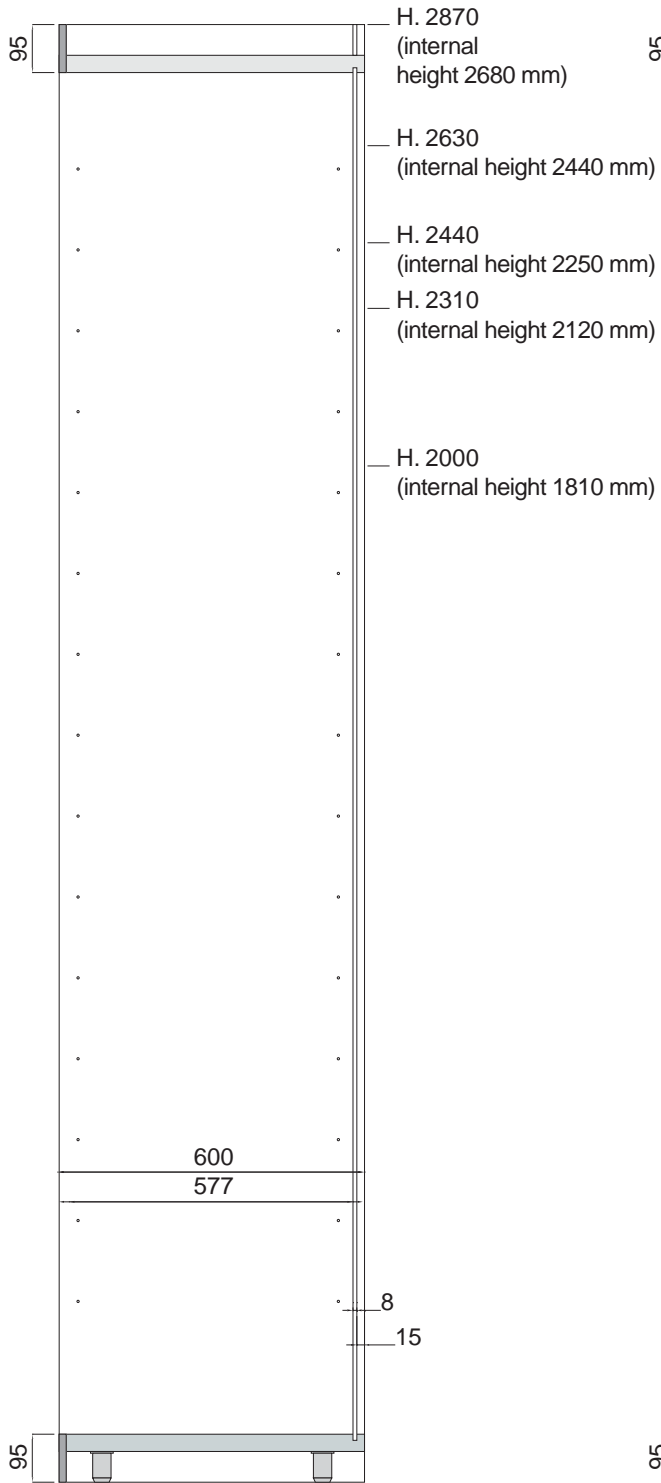


- glossy glass:
- white (extra light glass)
  - ivory 820
  - sand 430
  - beige grey B103
  - havana brown B104
  - ruby red Z102
  - Africa brown 440
  - dark grey 200

PAY ATTENTION: Not available for height 2870.

View of side panel depth 600 mm

View of side panel depth 470 mm



The plinth has the same finishing of the internal structure.



## Technical hints

---



Along the perimeter of the structure a special anti-dust profile made of black soft plastic is fitted.



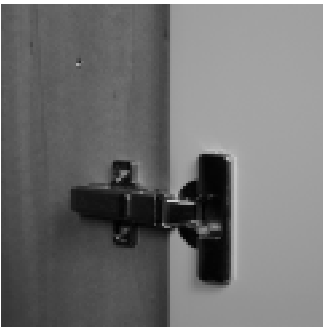
Many internal fittings are available.



Structure and doors in veneered wood with honeycombe core , side panels thickness 40 mm, doors thickness 28 mm.



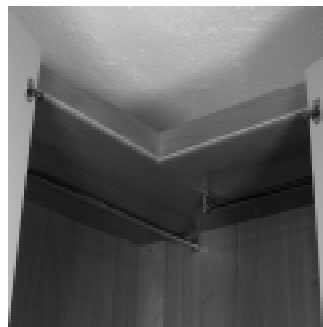
The position of the internal fitting can be changed at any time and this allows to use the space according to the personal needs.



The brass hubs fitted in the drills of the sides allow repositioning of the internal fittings without altering the aesthetics and the line of the sides.

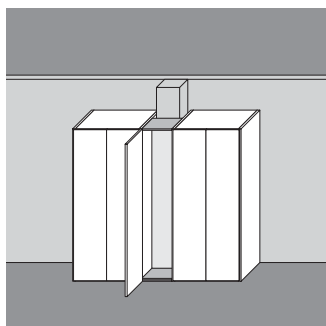


Adjustable feet are placed under each base to ensure the stability and the vertical and horizontal alignment of each element over the time.

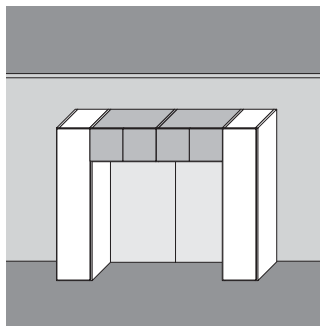


Internal finishing in walnut or mat white lacquered. The inner surface is more compact, hard and effective than decorative papers, pvc and decals.  
Cleaning remains a simple process over time and requires only a damp cloth.

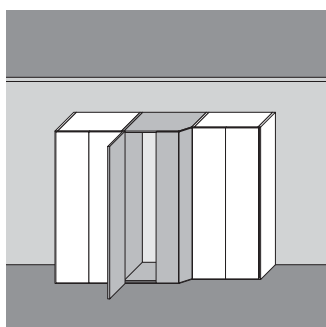
# Particular solutions



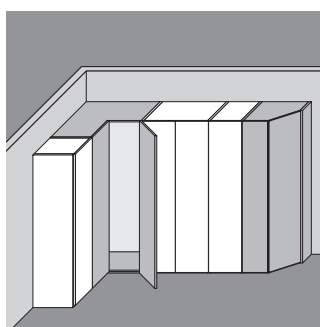
- **Depth reduction**  
The central unit is reduced in depth because of a wall column.



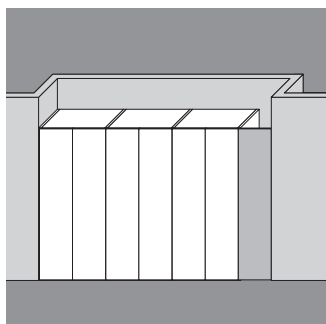
- **Bridge element**  
A bridge element or a over-the-door storage is available



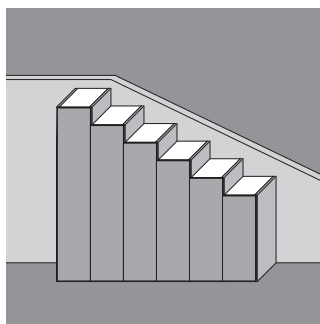
- **Change of depth**  
You can use the chamfered column to get two depths



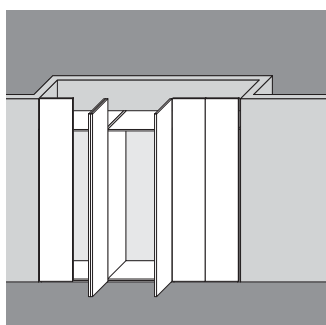
- **Corner and chamfered end element**  
Solution with corner column and chamfered end element



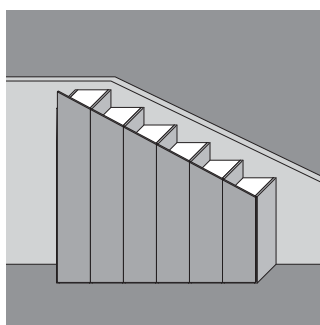
- **Closet door**  
The closet door can be used to close a space



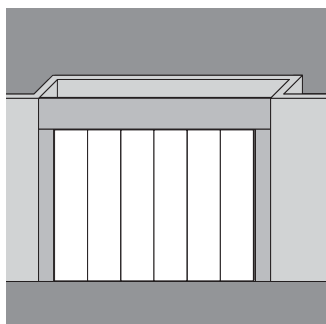
- **Sloping cut**  
Height reduction of each column



- **Doors higher than structure**  
Possible only with hinged doors



- **Sloping cut**  
Height reduction of each column and sloping cut for the doors



- **Filling strips**  
Horizontal and vertical filling strips are available